

H822D/LH822D HARVESTER



THE H822D SERIES. POWERFUL, COMPACT AND BUILT FOR THE OPERATOR.

The H822D series is a powerful, stable, compact, forest duty carrier. Harvester optimized hydraulics for high production. Large, comfortable, ergonomic operating environment. Excellent access to daily service points.

THE H822D

Long reach, powerful lift capacity and minimal tail-swing for reduced travel and less site disturbance in thinning and final fell applications.



THE LH822D

Super duty leveling system with long track frames for poise and stability. The ultimate machine for a wide range of steep slope harvesting applications.



Tigercat[®]
Tough • Reliable • Productive

POWER AND ACCESS

CLAMSHELL STYLE RETRACTING ROOF ENCLOSURE AND NEAT, COMPARTMENTALIZED COMPONENT ARRANGEMENT.

Powered enclosure fully opens for clear access to both sides of the engine and all daily service points. Separate compartment with hinged cover and shields that separate the engine from the hydraulic pumps and valves.



Tigercat
by **FPT**
POWERTRAIN TECHNOLOGIES

TIGERCAT FPT ENGINE TECHNOLOGY

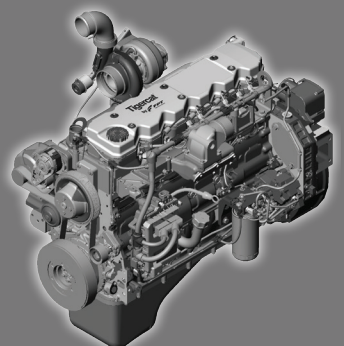
Tigercat FPT Tier 2 and Tier 4f engines offer quick load response, low operating costs and high power density, combined with excellent fuel economy.

The second-generation common rail fuel injection system provides top performance in the most demanding applications.

Tigercat FPT Tier 4f emission technology is simple and reliable. The Tier 4f configuration meets emission standards without complex add-on components. The key is the patented selective catalyst reduction (SCR) after-treatment system.

Tigercat FPT engines offer improved reliability and lower long-term maintenance costs – the clear power choice for forestry and off-road industrial applications.

TIGERCATPOWER.
TIGERCATSUPPORT.



HIGH SPEED, HIGH PERFORMANCE, HIGH EFFICIENCY.

Tigercat's patented ER® technology allows the machine operator to extend and retract the boom on a horizontal plane smoothly and quickly using a single joystick. But the benefit goes beyond reducing operator fatigue.

Key to ER technology is reduced energy consumption. The ER system transfers energy back and forth between the main and the stick boom functions, reducing the total energy required to move the boom system. This reduces demands for power, pump flow and system cooling. The result is increased productivity and reduced fuel consumption per unit of production.

ER
technology

EFFICIENT HIGH-CAPACITY COOLING SYSTEM

Automatic variable fan speed for improved fuel efficiency and automatic reversing cycle to clean the heat exchangers. Rear cooling air intake, well away from saw discharge.



EXTREME DUTY LEVELING SYSTEM

Field proven, millions of hours of operation. Long frames and wide stance for excellent stability. Thick steel plate, massive cylinders and tapered roller bearings. Unique geometry improves machine stability on sloping terrain.

DURABLE UPPER TURNTABLE AND FRAME CONSTRUCTION

One piece 32 mm (1.25 in) thick turntable base plate. Upper assembly will not dent or deform from impacts.



SPECIFICATIONS

H822D

LH822D

DIMENSIONS WITH STANDARD TRACK SHOE

WIDTH	3 388 mm (133 in)	3 430 mm (135 in)
LENGTH less boom	4 750 mm (187 in)	4 750 mm (187 in)
HEIGHT less skylight	3 330 mm (131 in)	3 708 mm (146 in)
GROUND CLEARANCE	710 mm (28 in)	710 mm (28 in)
WEIGHT less attachment	28 350 kg (62,500 lb)	33 800 kg (74,600 lb)
TAIL SWING over side	406 mm (16 in)	356 mm (14 in)

POWER

ENGINE Tier 4f	Tigercat FPT N67 Tier 4f	Tigercat FPT N67 Tier 4f
▶ RATED	210 kW (282 hp) @ 2,100 rpm	210 kW (282 hp) @ 2,100 rpm
▶ PEAK	210 kW (282 hp) @ 2,100 rpm	210 kW (282 hp) @ 2,100 rpm
ENGINE Tier 2	Tigercat FPT N67 Tier 2	Tigercat FPT N67 Tier 2
▶ RATED	205 kW (275 hp) @ 2,100 rpm	205 kW (275 hp) @ 2,100 rpm
▶ PEAK	210 kW (282 hp) @ 2,000 rpm	210 kW (282 hp) @ 2,000 rpm
AIR FILTRATION	Precleaner and 2-stage engine air cleaner	Precleaner and 2-stage engine air cleaner
COOLING	Aluminum side-by-side radiator, oil cooler, charge air cooler Removable intake debris screen	Aluminum side by side radiator, oil cooler and charge air cooler Removable intake debris screen
FAN	Hydraulically driven, automatic variable speed, reversible	Hydraulically driven, automatic variable speed, reversible
FUEL CAPACITY	585 L (155 US gal)	585 L (155 US gal)
DEF CAPACITY Tier 4f	80 L (21 US gal)	80 L (21 US gal)

HYDRAULIC SYSTEM

PUMP, MAIN	Piston	Piston
PUMP, ATTACHMENT	Piston	Piston
PUMP, COOLING FAN	Piston	Piston
RESERVOIR	204 L (54 US gal)	204 L (54 US gal)
FILTRATION	(5) Spin-on, 7 micron full flow; (1) Water absorbing	(5) Spin-on, 7 micron full flow; (1) Water absorbing
CYLINDERS, HOIST	130 mm (5.1 in) bore	130 mm (5.1 in) bore
CYLINDERS, STICK/ER	(2) 110 mm (4.3 in) bore	(2) 110 mm (4.3 in) bore
CYLINDERS, LEVELING	N/A	(2) 180 mm (7 in) bore
HORSE POWER CONTROL	Electronic speed sensing; All-speed antistall	Electronic speed sensing; All-speed antistall

UNDERCARRIAGE

TRACK FRAMES	R6-152-5 heavy-duty forestry Integral track guides/ramp angles	R7-163L super-duty forestry leveling Integral track guides/ramp angles
TRACK CHAIN	F8/D6D 203 mm (8 in) pitch sealed and greased	FH400 215 mm (8.5 in) pitch
FINAL DRIVE	(2) Piston motors with brake valves; Infinitely variable speed	(2) Piston motors with brake valves; Infinitely variable speed
TRACTIVE EFFORT	280 kN (63,000 lbf)	367 kN (82,600 lbf)
GEARBOX	Triple reduction planetary type with brake	Triple reduction planetary type with brake
FRONT IDLER	Hydraulic track adjuster; Spring shock absorber	Hydraulic track adjuster; Spring shock absorber
SLIDES, UPPER	Replaceable, bolt-on; Optional rollers	Replaceable, bolt-on
ROLLERS, LOWER	(9) D6 single/double flange tractor type	(10) FH400 excavator type
TRACK SHOE	610 mm (24 in) single/double grouser	610 mm (24 in) single grouser
▶ Optional	710 mm (28 in) single grouser tri-track 760 mm (30 in) double grouser tri-track 915 mm (36 in) triple grouser tri-track	710 mm (28 in) single grouser
LEVELING	N/A	26° forward; 7° rear; +/-22° side

TOP SPEED

LOW RANGE	1,9 km/h (1.2 mph)	1,9 km/h (1.2 mph)
HIGH RANGE	4,2 km/h (2.6 mph)	4,2 km/h (2.6 mph)

BRAKES

TRACK	Friction disc; Automatic spring applied, hydraulic release	Friction disc; Automatic spring applied, hydraulic release
SWING	Friction disc; Manual spring applied, hydraulic release	Friction disc; Manual spring applied, hydraulic release

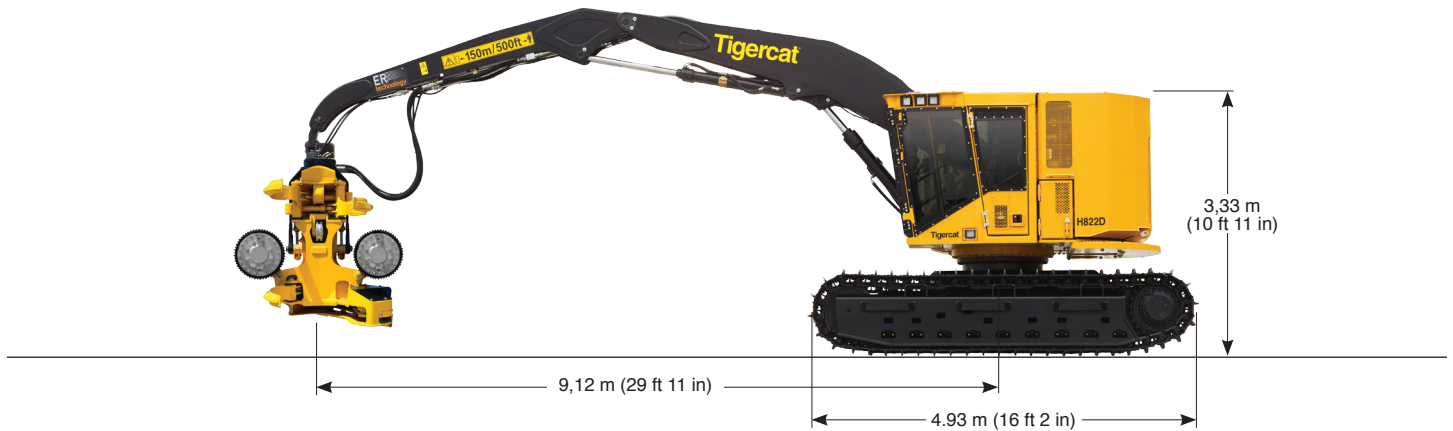
H822D

LH822D

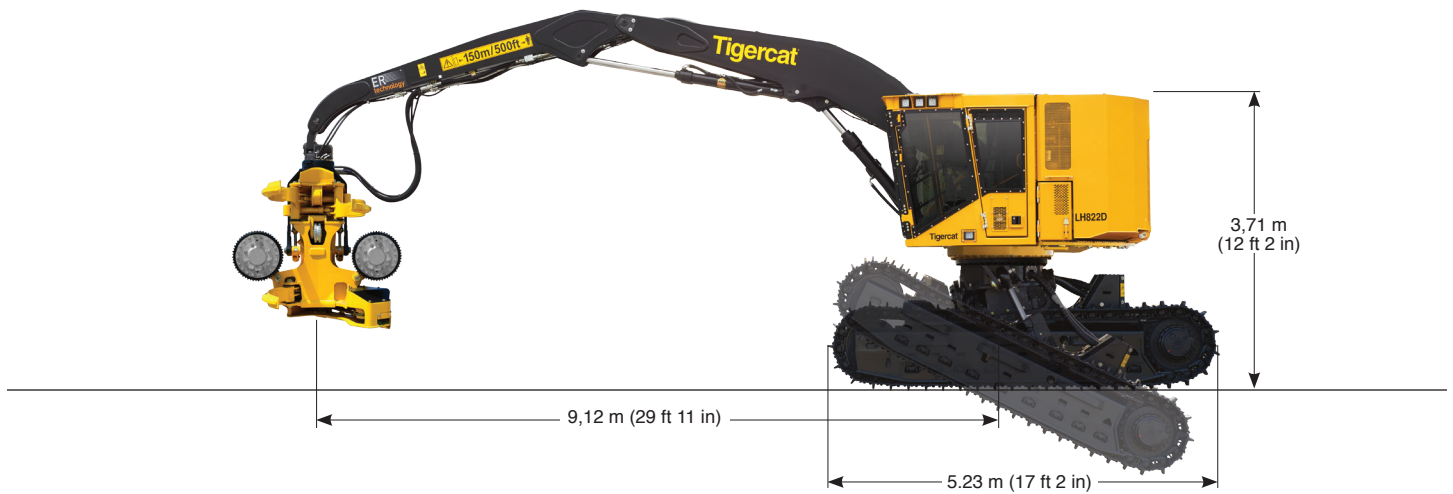
ROTATING UPPER		
SWING DRIVE	7 rpm variable speed; 360° continuous rotation; Double reduction, swing drive planetary gearbox with brake; Piston swing motor	
SWING BEARING	1 190 mm (47 in) ball circle diameter	
ENCLOSURE	Perforated plate on doors for ventilation; Hydraulic operated engine enclosure; Rear air intake for cooling system and engine Vandal protection; Smooth exterior	
ER® BOOM SYSTEM		
MAXIMUM CUT RADIUS	9 120 mm (359 in)	9 120 mm (359 in)
MINIMUM CUT RADIUS	3 250 mm (128 in)	3 250 mm (128 in)
BARE PIN LIFT full reach	3 495 kg (7,700 lb)	3 495 kg (7,700 lb)
ELECTRICAL		
BATTERY	(2) AGM, 12 v	(2) AGM, 12 v
ALTERNATOR	110 amp, 24 v	110 amp, 24 v
SYSTEM VOLTAGE	24 v	24 v
LIGHTING	(14) LED; (4) LED service lights, engine enclosure	(14) LED; (4) LED service lights, engine enclosure
▶ Optional	High output LED lighting	High output LED lighting
OPERATOR'S STATION		
CAB	Insulated, pressurized and isolation mounted; A/C, heater, defroster; Upward vision camera system; Full length polycarbonate windshield/entry door; Polycarbonate right and left side windows; One-piece polycarbonate side door window with steel guarded upper sliding section for ventilation; AM/FM digital stereo and auxiliary input port; Bluetooth® audio and hands-free calling; (2) power points	
CONTROLS	Hydraulic proportional for boom/travel/swing/rotate with electronic speed control limiter; Electronic for clamp/accumulating arms/wrist Electric switch for swing brake; Electronic control system with colour LCD display screen for machine monitoring and function adjustment	
SEAT	Full suspension air ride, fully adjustable with angled mounting; Armrest mounted Tigercat joysticks	
OTHER STANDARD EQUIPMENT		
	Fuel suction strainer; Alarm for track movement	Fuel suction strainer; Alarm for track movement; Bottom fueling
OPTIONAL EQUIPMENT		
	Counterweight kit; R7-150 undercarriage; Bolt-on toolbox Cold weather kit; Bottom fueling	Bolt-on toolbox; Cold weather kit
HARVESTING HEAD		
	Tigercat 570; Flexible hydraulic system to accept various harvesting heads	

H822D/LH822D HARVESTER

H822D HARVESTER



LH822D HARVESTER



EMAIL	comments@tigercat.com
PHONE	519.753.2000
WEBSITE	www.tigercat.com
ADDRESS	54 Morton Ave. East, Brantford, Ontario Canada, N3R 7J7
MAIL	Box 637 N3T 5P9

© 2001 - 2017 Tigercat International Inc. All Rights Reserved. TIGERCAT, WIDERANGE, TURNAROUND, ER, EHS, LOW-WIDE and TEC, their respective logos, TOUGH RELIABLE PRODUCTIVE, TIGERCAT TV, "Tigercat Orange" and BETWEEN THE BRANCHES, as well as corporate and product identity, are trademarks of Tigercat International Inc., and may not be used without permission. TIGERCAT, TURNAROUND, WIDERANGE, EHS and ER, and their respective logos are registered trademarks of Tigercat International Inc.