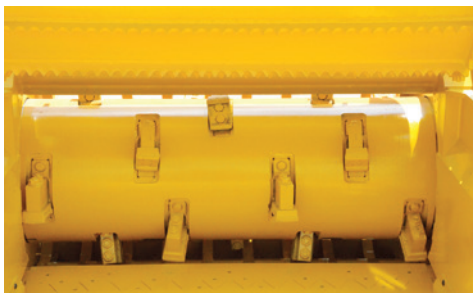


# HG4000

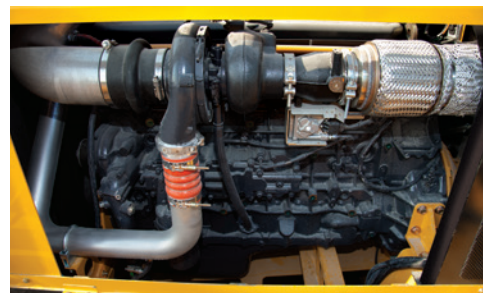
## HORIZONTAL GRINDER



**JOBSITE SAFETY.** The Thrown Object Deflector (TOD) reduces the amount and distance of thrown material debris, while also reducing interference when loading over-length material.



**OPTIMAL CUTTING PERFORMANCE.** The patented Series II duplex drum offers proven cutting performance, and reversible hammers and tips nearly double the wear life of single-sided designs and simplify daily maintenance. The optional chip drum produces a consistently chipped end product, rather than traditional shredded material, for uses such as biofuel.



**ENGINE POWER.** The Fiat Powertrain Technology (FPT) Tier 4 Final engine provides 515 hp (384 kW) of power to meet your jobsite demands.



**PRODUCT SIZING.** The dual-screen design, along with several screen options, helps boost processing efficiency while controlling end product sizing needs.



**PROGRESSIVE PROCESSING.** The patented SmartFeed system monitors engine rpm and adjusts grinding speed to increase productivity. The open-ended, wide infeed table makes material loading easy and efficient.



**JOBSITE EFFICIENCY.** Operation and maintenance are simple with easy access points to the radiator, the optional screen hoist and optional hydraulic stabilizers.

# HG4000 HORIZONTAL GRINDER

## GENERAL DIMENSIONS

Max transport length: 31' (9.4 m)

Max transport width: 8.2' (2.5 m)

Max transport height: 156" (396.2 cm)

Weight: 44,000 lb (19,958.1 kg)

## ENGINE OPTION ONE

Make/Model: Fiat Powertrain Technology C13 Tier 4F

Max gross horsepower: 515 hp (384 kW)

Fuel tank capacity: 195 gal (738.2 L)

## ENGINE OPTION TWO

Make/Model: Fiat Powertrain Technology C13 R96 Tier 3

Max gross horsepower: 445 (332 kW)

Fuel tank capacity: 195 gal (738.2 L)

## INFEED CONVEYOR

Feed table width: 60" (152.4 cm)

Feed table length: 15' (4.6 m)

Loading height: 7.6' (2.3 m)

## INFEED ROLLER

Max feed height: 26" (66 cm)

Infeed roller diameter: 28" (71.1 cm)

## DUPLEX DRUM

Mill box opening: 60" x 26" (152.4 cm x 66 cm)

Drum diameter: 22.5" (57.2 cm)

Number of hammers: 9

Number of tips: 18

## CHIP DRUM OPTION

Mill box opening: 60" (152.4 cm)

Drum diameter: 27.3" (69.3 cm)

Depth of cut: Ranging from .125" to 1" (3.2 mm to 25.4 mm)

Number of knives: 24

## DISCHARGE SYSTEM

Belt length: 71.3' (21.7 m)

Belt width: 48" (121.9 cm)

Belt design: 3-ply – 330# with V-cleat

## HYDRAULIC SYSTEM

Tank capacity: 60 gal (227.1 L)

Implement pump type: Variable displacement, axial piston

Discharge conveyor pump: Fixed displacement, gear pump

## CONTROLS

Stationary: Side-mounted LCD control station

Remote: Multifunction with built-in LCD display, max 300' (91.4 m) operating range

## OPTIONS

Vermeer Confidence Plus® asset protection

Special paint

Air compressor

Screen hoist

Screen sizes

## NOTES:

---

---

---

---

---

---

Vermeer Corporation reserves the right to make changes in engineering, design and specifications; add improvements; or discontinue manufacturing at any time without notice or obligation. Equipment shown is for illustrative purposes only and may display optional accessories or components. Please contact your local Vermeer dealer for more information on machine specifications. Vermeer, the Vermeer logo, Equipped to Do More and Vermeer Confidence Plus are trademarks of Vermeer Manufacturing Company in the U.S. and/or other countries. Fiat Powertrain Technology is a trademark of FPI Industrial S.p.A. © 2016 Vermeer Corporation. All Rights Reserved. Printed in the U.S.A. Please recycle.

