

VERMEER MEGA Vacuum Excavators



Vermeer

EQUIPPED TO
DO MORE.

McLAUGHLIN
Providing Solutions Since 1921



MEGA 2000 - STAY ON THE JOB LONGER

The MEGA 2000 skid-mounted vacuum excavator specializes in large volume potholing to keep you on the job longer. The MEGA Vac series units are equipped with a 99 horsepower Kubota diesel engine with a 1200 cfm blower and feature a 2,000 gallon spoil tank and 925 gallons of fresh water to ensure you have the power and capacity required for extensive jobs.

MEGA 2600 - ULTIMATE HDD SUPPORT

The MEGA 2600 skid-mounted vacuum excavator is designed for fluid management and HDD support for up to D100x120 class rigs and Maxi Rigs. The Mega 2600 is typically paired with PP100XT DEEP power pack providing additional suction power with the 23 inches of mercury DEEP blower for increased fluid management capabilities. The MEGA 2600 also features 300 gallons of fresh water making it a versatile potholing unit when needed.

PP100XT AIR - ADDED VERSATILITY

The Air/Water Power Pack is equipped with a 99 horsepower Kubota diesel engine, 1200 cfm at 15" of mercury blower and a 185 cfm @ 100 psi rotary air compressor.

PP100XT DEEP - ADDED POWER

For HDD support fluid management jobs, the PP100XT DEEP power pack features a 99 horsepower Kubota diesel engine and a 1200cfm 23" of mercury deep vacuum blower for added suction capability. The PP100XT DEEP can be added to any MEGA vac configuration.



**Optional
Industry-leading
Hydraulic Boom**

**Cam Over External
Hydraulic Rear Door**

MEGA VAC

**Convenient and Easy
to Secure Enclosed
Hose Storage**

**Three-Stage
Cyclonic Filtration**



McLaughlin products get your job done right every time.

RELY ON MCLAUGHLIN.

**300 gal of Fresh Water with
5.6 gpm @ 3,000 psi Water System
(410 or 925 gal Round Options Available)**



**Optional
Reverse Flow for
Pressure Offloading**

**Powerful 99hp Kubota
Diesel Engine with
Lockable Enclosure**

Mega Vacuum Excavators

The Vermeer MEGA Vacuum Excavators from McLaughlin feature all the proven components of McLaughlin's industry-leading vacuum excavators, teamed with larger spoil tanks and big fresh water capacity. This combination provides customers with a large truck vac that is an efficient and flexible addition to their fleet.



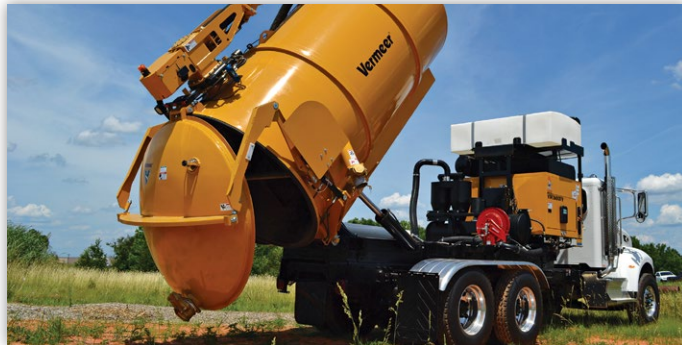
THREE-STAGE CYCLONIC FILTRATION

This system allows for wet and dry vacuum excavation while prolonging filter life and keeping maintenance costs low.



CAM OVER HYDRAULIC REAR DOOR

Provides a 360-degree positive seal, even under reverse pressure without additional clamping requirements. The highly reliable Cam-Over design has no in-tank moving parts, so all maintenance is external.



FULL TANK DUMP CAPABILITY

High lift and a 50 degree dumping angle empties solid efficiently.



REVERSE FLOW - *Optional*

Keeps your work moving forward with the ability to offload spoil faster and clear hose clogs quickly. Simply reverse the airflow by changing the valve position for positive tank pressure.



HYDRAULIC BOOM - *Optional*

Exclusive telescoping boom maintains hose length during extension and incorporates a remote controlled hydraulic valve for vacuum shut off. Available with manual or hydraulic rotations.



HOT BOX - *Optional*

Allows you to work with water heated up to 165 degrees F to improve digging in frost or heavy clay.

MEGA 2000 & 2600 Vacuum Specifications

MEGA 2000

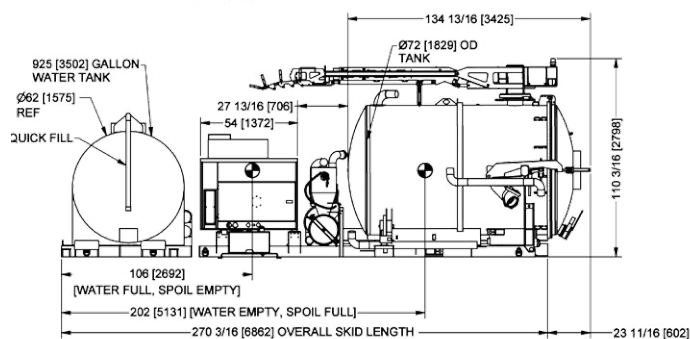
MEGA 2600

Dimensions and Weights		
Length	290.8" (738.6 cm)	262.4" (666.5 cm)
Height without Boom	110.06" (279.6 cm)	113.1" (287.3 cm)
Height with Boom & Reverse Flow	128.96" (327.6 cm)	132" (335.3 cm)
Empty Weight	9850 lbs (4468 kg)	12860 lbs (5833 kg)
Width	97.7" (248.2 cm)	98.06" (249.1 cm)
Engine		
Horsepower	99 hp (73.8 kW)	99 hp (73.8 kW)
	Kubota Diesel	Kubota Diesel
Enclosure		
Fuel Tank Capacity	22 gal (83.3 L)	22 gal (83.3 L)
Water Tank		
Water Tank Capacity	925 gal (3501.5 L)	300 gal (1135.6 L)
Number of Tanks	1	1
Water Pump	5.6 gpm @ 3000 psi (21.2 L/min @ 206.8 bar)	5.6 gpm @ 3000 psi (21.2 L/min @ 206.8 bar)
High Pressure Hose Length	50' (15.2 m)	50' (15.2 m)
Low Water Shutoff	ELECTRONIC	ELECTRONIC
Spoil Tank		
Spoil Tank Capacity	2000 gal (7570.8 L)	2600 gal (9842.1 L)
Door Type	HYDRAULIC	HYDRAULIC
In Tank Washdown	STANDARD	STANDARD
Mechanical full tank shut off	STANDARD	STANDARD
Electric full tank shut off	STANDARD	STANDARD
Tank Lift Type	DUAL CYL	DUAL CYL
Vacuum		
Type of Filters	2 MICRON WASHABLE	2 MICRON WASHABLE
Cyclonic filtration system	STANDARD	STANDARD
Hose Length	3-10' (3.04 m)	3-10' (3.04 m)
Hose Width	4" (10.2 cm)	4" (10.2 cm)
Vacuum Hg Mercury	15	15
Vacuum cfm	1200	1200
Suction Hose Storage	STANDARD	STANDARD
Boom		
Reach	14' (4.3 m)	14' (4.3 m)
Movement	270 DEGREE ROTATION	270 DEGREE ROTATION
Remote Control	WIRELESS	WIRELESS
Available Options		
Pressure offloading (reverse flow)	YES	YES
Additional Water Options	YES	YES
Hydraulic Boom	YES	YES
Hot Box water heater	YES	YES
Air Compressor	YES	YES

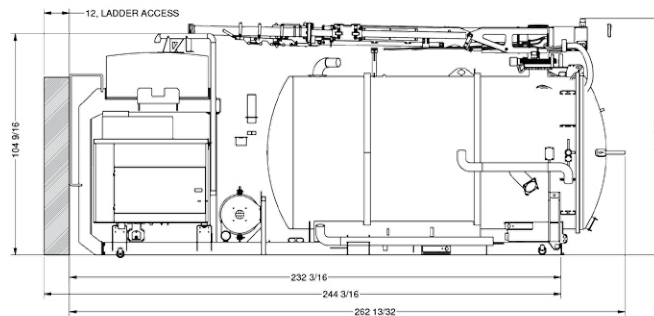
Full weights calculated using 8 lb/gal (1 kg/L) for water and 10 lb/gal (1.2 kg/L) for spoil.

Vermeer®

Vermeer Corporation
Pella, Iowa 50219 U.S.A.
Phone: (641) 628-3141
1-888-6337 (USA only)
www.vermeer.com



MEGA 2000



MEGA 2600

McLAUGHLIN®
Providing Solutions Since 1921

McLaughlin Group Inc.
Greenville, SC 29605
Phone: (864) 277-5870
1-800-435-9340
www.mclaughlinunderground.com

Equipment shown is for illustrative purposes only and may display optional accessories or components. Please contact your local Vermeer dealer for more information about machine specifications. Vermeer Corporation reserves the right to make changes in engineering, design, and specifications; add improvements; or discontinue manufacturing at any time without notice or obligation. Vermeer and the Vermeer logo are trademarks of Vermeer Manufacturing Company in the U.S. and/or other countries. © 2013 Vermeer Corporation. All Rights Reserved. McLaughlin and the McLaughlin logo are trademarks of McLaughlin Group, Inc. © 2013 McLaughlin Group, Inc. All Rights Reserved.