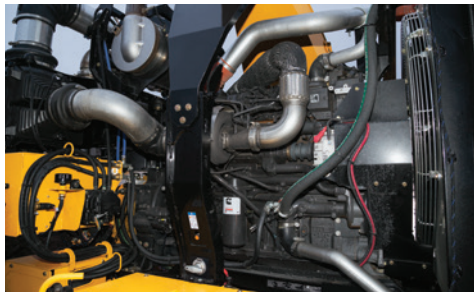


WC2500XL WHOLE TREE CHIPPER



HIGHER HORSEPOWER. COMPACT SIZE. The WC2500XL has a compact design to maneuver more easily in the woods, on tight jobsites and down narrow paths, but packs 600 hp (447 kW) of power to meet your production demands.



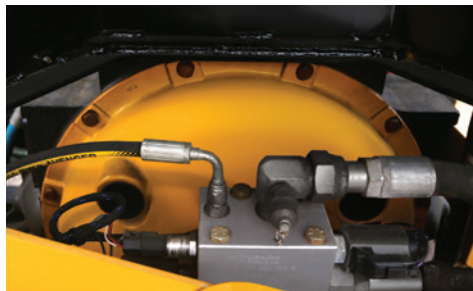
INCREASED PRODUCTIVITY. With SmartCrush technology that automatically increases down pressure when difficult material enters the cutting drum, and variable-speed dual-infeed conveyor chains, operators can concentrate on loading the machine — not pushing the material through.



REPLACEABLE WEAR PARTS. High-wear material flow areas of the machine — such as the drum, discharge chute, cutter housing and infeed conveyor floor — are designed with replaceable bolt-in wear parts to extend machine life.



EASIER KNIFE SETUP WITH FLEXIBLE CHIP SIZING. Microdrum design improves productivity over higher horsepower models. Knife position is set with two bolts—no babbiting needed, making jobsite knife changing easier. Adjustable bite size in 1/8" (.3 cm) increments, up to 5/8" (1.6 cm).



SELF-ADJUSTING CLUTCH. Automatic, push-button clutch provides consistent engagement every time — helping to prolong clutch life, lower maintenance costs and reduce operator error.



CONVENIENT REMOTE CONTROL. ACS control system designed specifically for this machine allows operators to engage/disengage clutch and control trip meter, Ecolide™ engine control system and work lights from the remote.



VERMEER.COM



EQUIPPED TO
DO MORE.™

WC2500XL WHOLE TREE CHIPPER

GENERAL

Max transport length: 29.8' (9.1 m)

Max transport width: 108" (274.3 cm)

Max transport height: 10.9' (3.3 m)

Weight: 38,000 lb (17,236.5 kg)

Tongue weight: 7500 lb (3401.9 kg)

Sound power: 121 dB(A)

ENGINE OPTION

Make/Model: Cummins QSX15 Tier 4 Final

Number of cylinders: 6

Max gross horsepower: 600 hp (447 kW)

Max torque: 2050 ft-lb (2779.4 Nm)

Fuel type: Ultra-low sulfur diesel

Cooling fan: Reversible

Clutch type: PT Tech electronically controlled dry

INFEED SYSTEM

Infeed roller width: 34" (86.4 cm)

Max feed height: 27" (68.6 cm)

Infeed roller weight: 575 lb (260.8 kg)

Infeed roller diameter: 28" (71.1 cm)

Feed table width: 98" (248.9 cm)

Feed table length: 10' (3 m)

Feed conveyor type: Dual independent chain

Infeed slope: 6°

CHASSIS

Frame: 10" x 4" x .375" (25.4 cm x 10.2 cm x 1 cm) wall rectangular tubing

Tongue: Fixed with skidder grab

Skidder grab: 30" (76.2 cm) wide

Axle/Suspension: Dual axle with leaf spring

Brake type: Air

OPTIONS

Special paint

Extended warranty

Air compressor

Vermeer Confidence Plus® asset protection program

Abrasion-resistant belly band

NOTES:

Vermeer Corporation reserves the right to make changes in engineering, design and specifications; add improvements; or discontinue manufacturing at any time without notice or obligation. Equipment shown is for illustrative purposes only and may display optional accessories or components. Please contact your local Vermeer dealer for more information on machine specifications. Vermeer, the Vermeer logo, Equipped to Do More, Vermeer Confidence Plus and Ecolde are trademarks of Vermeer Manufacturing Company in the U.S. and/or other countries. Cummins is a trademark of Cummins Inc. © 2016 Vermeer Corporation. All Rights Reserved. Printed in the U.S.A. Please recycle.

