

SC900™

Large Walk-Behind Scrubbers



Unsurpassed simplicity.
Undeniable reliability.

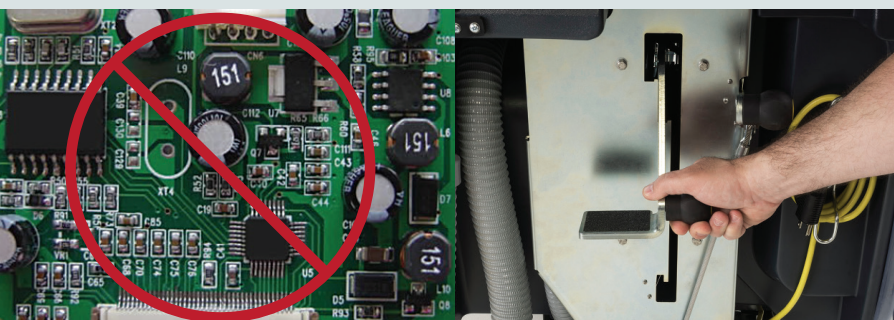
Designed to be durable, intuitive and efficient.

The SC900™ large walk-behind scrubber removes the complexity associated with floor cleaning equipment, especially for the building service contractor. The absence of sophisticated electronics and excessive features makes it simple to use by anyone, provides maximum uptime and reliability and lowers your overall cost to clean.

With the Advance SC900™, there has never been a more solid and reliable path toward perfectly clean floors. The SC900 tackles your toughest cleaning challenges consistently, at the lowest possible cost.



When it must get cleaned count on the SC900™ to get the job done.



Control board-free design eliminates costly repairs.

A simple mechanical deck lever removes the complexity, unreliability and service costs associated with alternative methods.



No confusing buttons or switches for a simple and easy to use machine.

Designed to do the job. Every time.



- 1** *Minimal electronics for increased reliability and lower total cost of ownership*
- 2** *Built with hand select components from top manufacturers for long lasting durability*
- 3** *Essential functions are uncomplicated for the utmost in reliability*
- 4** *Powerful motors will provide years of trouble-free operation and powerful performance*
- 5** *Simplified user interface eliminates operator confusion and makes operator training fast and easy*

Retail

Municipal Facilities

Grocery Stores Education

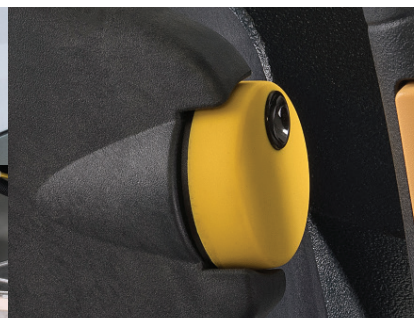
Government Buildings Healthcare



Mechanical scrub and vacuum levers for increased reliability, lower total cost of ownership and increased ease of use.



Safety yellow touch points make the machine easy to use and eliminate operator errors.



Conveniently located thumb controlled cruise control increases productivity and safety.



A single reverse button for control, safety and ease of use.

Technical Specifications

Models	SC900™ 28D	SC900™ 34D	SC900™ 32C
Head Type	Disc	Disc	Cylindrical
Cleaning Width	28 in (71 cm)	34 in (86 cm)	32 in (81 cm)
Maximum Scrub and Transport Speed	3.2 mph (5.15 km/hr)	3.2 mph (5.15 km/hr)	3.2 mph (5.15 km/hr)
Productivity Per Hour Maximum (ISSA 540)	28,028 ft²/hr (2,604 m²/hr)	34,034 ft²/hr (3,162 m²/hr)	31,915 ft²/hr (2,965 m²/hr)
Drive Motor	0.5 hp	0.5 hp	0.5 hp
Solution Tank	30 gal (114 L)	30 gal (114 L)	30 gal (114 L)
Recovery Tank	32 gal (121 L)	32 gal (121 L)	32 gal (121 L)
Flow Rate	0-1 GPM (3.8 LPM)	0-1 GPM (3.8 LPM)	0-1 GPM (3.8 LPM)
Productivity Per Tank			
@ 0.25 GPM (0.016 L/S)	120 minutes	120 minutes	120 minutes
@ 0.5 GPM (0.032 L/S)	60 minutes	60 minutes	60 minutes
@ 0.75 GPM (0.047 L/S)	40 minutes	40 minutes	40 minutes
@ 1.0 GPM (0.063 L/S)	30 minutes	30 minutes	30 minutes
Brush Motor	0.75 hp	0.75 hp	0.75 hp
Brush Speed	250 RPM	250 RPM	900 RPM
Brush Down Pressure	80, 145, 200 lb (36, 66, 91 kg)	80, 145, 200 lb (36, 66, 91 kg)	75, 100, 125 lb (34, 45, 57 kg)
Vacuum Motor	0.95 hp	0.95 hp	0.95 hp
Maximum Vacuum Motor Waterlift	71 in H ₂ O (17.7 KPA)	71 in H ₂ O (17.7 KPA)	71 in H ₂ O (17.7 KPA)
Maximum Vacuum Motor Air Flow	96 CFM (2,718 LPM)	96 CFM (2,718 LPM)	96 CFM (2,718 LPM)
Sound Level (IEC, ISO 11201)	68 dB A	68 dB A	69 dB A
Width Without Squeegee	30.3 in (77 cm)	30.3 in (77 cm)	30.6 in (77.7 cm)
Width With Squeegee	41.8 in (106.6 cm)	41.8 in (106.6 cm)	41.8 in (106.6 cm)
Height	44.8 in (113.8 cm)	44.8 in (113.8 cm)	44.8 in (113.8 cm)
Length	65.4 in (166 cm)	67.4 in (171 cm)	63.1 in (160.3 cm)
Floor Loading Right Front	147 PSI (1.0 N/mm²)	128 PSI (0.89 N/mm²)	155 PSI (1.1 N/mm²)
Floor Loading Left Front	107 PSI (0.74 N/mm²)	132 PSI (1.0 N/mm²)	128 PSI (0.88 N/mm²)
Floor Loading Right Rear	205 PSI (1.4 N/mm²)	432 PSI (3.0 N/mm²)	245 PSI (1.7 N/mm²)
Floor Loading Left Rear	521 PSI (5.6 N/mm²)	640 PSI (4.4 N/mm²)	416 PSI (2.9 N/mm²)
Gross Weight (310 Ah batteries, Full Solution Tank)	1,189 lb (539.3 kg)	1,206 lb (547 kg)	1,235 lb (560 kg)
Protection Grade	IPX4	IPX4	IPX4
Gradeability Transport and Cleaning	2%, 1.15 degrees	2%, 1.15 degrees	2%, 1.15 degrees
Battery Options (36 V, 6 ea, 6 V)	242 Ah wet, 310 Ah wet, 255 Ah AGM	242 Ah wet, 310 Ah wet, 255 Ah AGM	242 Ah wet, 310 Ah wet, 255 Ah AGM

Specifications are subject to change without notice.



Accessories

All Models

- Squeegee blade kit, genuine LINATEX® (pn 56115333)
- Squeegee blade kit, polyurethane (pn 56115335)
- Squeegee blade kit, natural gum rubber (pn 56115334)
- Two replacement keys (pn 1462887000)
- TrackClean with no operator ID key (pn 56115417)
- TrackClean with operator ID key (pn 56115416)
- Single point battery watering kit (pn 56314981)

Model Specific

- Prolene brush for 28D (pn 56505804)
- 180 MidLite Grit brush for 28D (pn 56505808)
- Pad holder for 34D (pn 56505780)
- Prolene brush for 34D (pn 56505784)
- 180 MidLite Grit brush for 34D (pn 56505788)
- Prolene cylindrical brush for 32C (pn 56407475)
- 180 MidLite Grit cylindrical brush for 32C (pn 56407476)
- Pad holder for 28D (pn 56505800)

Visit <http://www.advance-us.com> or contact your Advance sales representative to learn more.

©2017 Nilfisk, Inc. Form L3450A 4-26-17



Smart cleaning.

Our products are designed using innovative technologies that increase productivity and drive down the cost to clean.

Maintain peak performance with Nilfisk Parts.

Nilfisk, Inc.

9435 Winnetka Avenue North
Brooklyn Park, MN 55445
www.advance-us.com
Phone 800-850-5559
Fax 800-989-6566

240 Superior Boulevard
Mississauga, Ontario, Canada L5T 2L2
www.nilfisk-advance.ca
Phone 800-668-8400
Fax 800-263-5111

