

Technical sheet

# 260 TJ

Aerial Work Platforms Diesel Telescopic Jib

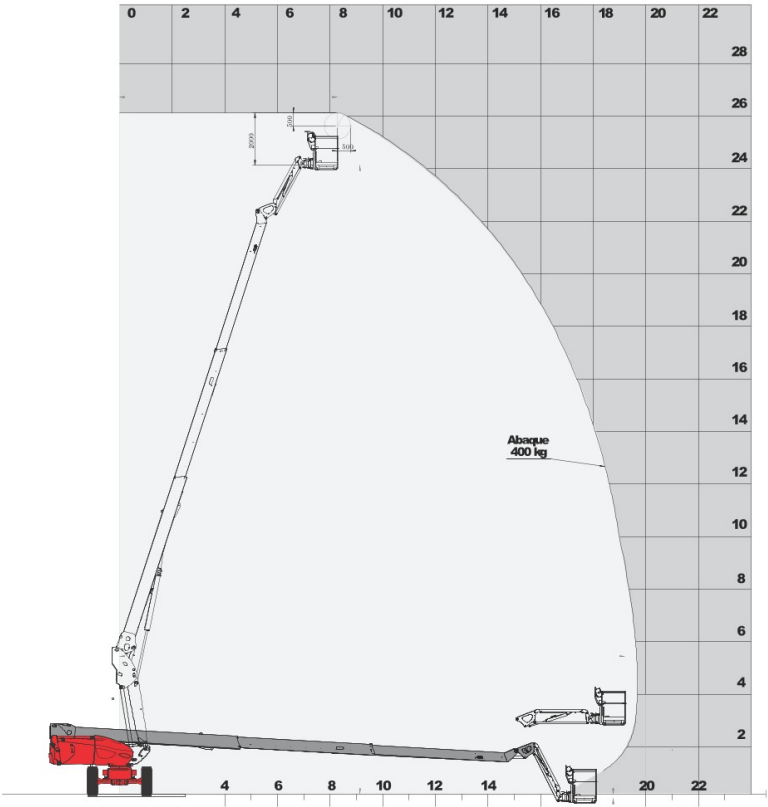


 **MANITOU**  
HANDLING YOUR WORLD

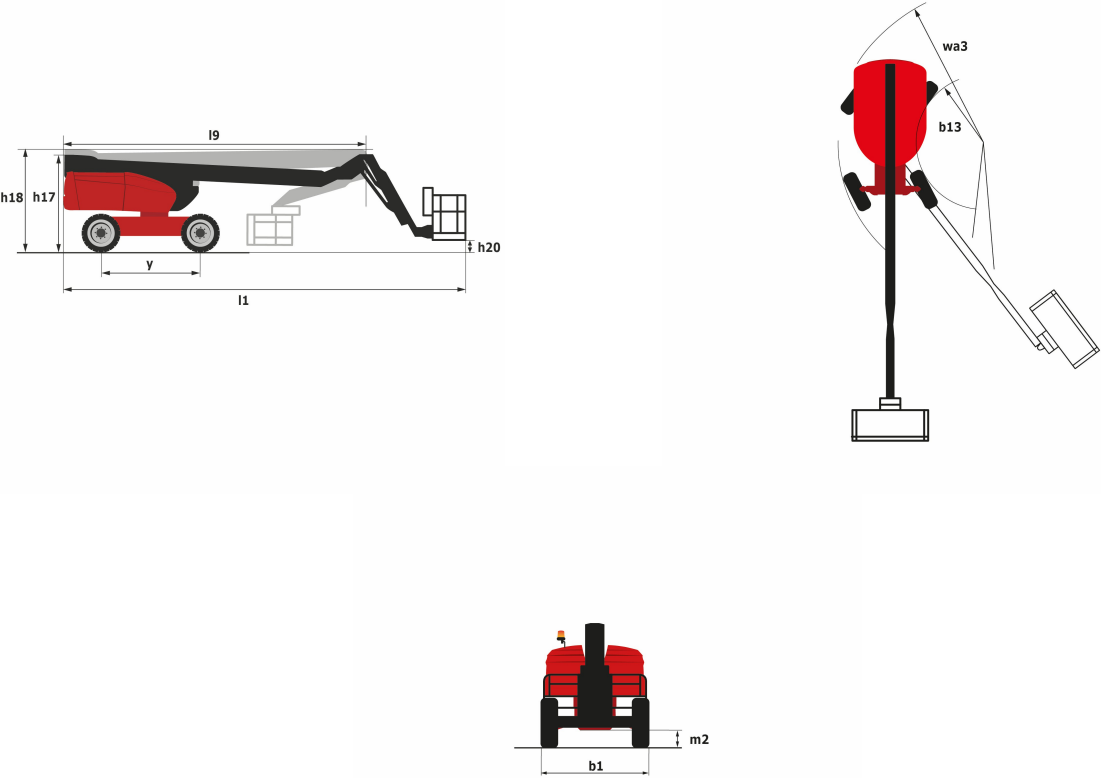
Capacities	Metric
Working height	25.89 m
Platform height	23.89 m
Horizontal outreach	19.70 m
Pendular arm rotation (top/bottom)	70.30 ° / -63 °
Platform capacity	400 kg
Turret rotation	360 °
Platform rotation (right/left)	90 ° / 90 °
Number of people (inside/outside)	3 / 3
Weight and dimensions	
2.1 - Platform weight*	16380 kg
2.2 - Platform dimension (L x l)	2.3 x 0.9 m
b1 - Overall width	2.48 m
l1 - Overall length	10.84 m
l9 - Overall length (folded)	7.88 m
h17 - Overall height	2.80 m
h18 - Overall height (folded)	2.80 m
h20 - Floor height (access)	0.40 m
a7 - Counterweight offset (turret at 90°)	1.42 m
b13 - Inner turning radius	1.75 m
wa3 - Outer turning radius	6.85 m
m2 - Ground clearance at center of frame	0.41 m
y - Wheelbase	2.71 m
Performances	
Travel speed	4.50 km/h
Working speed	0.80 km/h
Gradeability	34.50 %
Permissible leveling	4 °
Tires	
Type of tires	Solid Tyres Cured-on
Drive wheels (front/rear)	2 / 2
Steering wheels (front/rear)	2 / 2
Braking wheels (front/rear)	2 / 2
Engine	
I.C. engine	Kubota V2403-M Stage 3A
I.C. Engine power rating	45 hp / 34.10 kW
Miscellaneous	
Ground pressure	21.30 daN/cm <sup>2</sup>
Maximum available hydraulic pressure	400 bar
Capacity of hydraulic tank	94 l
Capacity of fuel tank	72 l
Vibration level	<0.50 m/s <sup>2</sup>
Daily consumption**	10.50 l

\* varies according to options and standards of the country to which the machine is delivered

\*\* According to "REDUCE cycle



Dimensional drawing



## Equipment

---

### Standard

20" tyres

230V Predisposition

4 wheel steer with crab mode

4 wheel drive

Active oscillating front axle

Audible alarm and illuminated indicator lamp (leveling, overload, lowering)

Backup electrical pump

Large basket with three entries

CAN bus technology

Continuous turret rotation

Operator presence pedal

Differential locking on rear axle

Electronic platform compensation

Emergency stop button in platform and on frame

Engine mounted on sliding platform

Rear axle with limited slip differential

Fuel gauge with low level indicator

Hour meter

Integrated diagnostic assistance

Remote control

### Optional

110 or 230V plug with differential circuit-breaker

Additional storage boxes

Air predisposition

Beep on every movement

Beep upon travel

Biodegradable oil

Catalytic cleaner

SMS : Safe Man System

Highly efficient battery

Easy Manager

Key lock on fuel tank

Basket 1,800 mm

Extreme cold oil



Siège Social  
430 rue de l'Aubinière - 44150 Ancenis Cedex - France  
Tel: +33(0)2 40 09 10 11 - Fax: +33 (0)2 40 09 10 97  
[www.manitou.com](http://www.manitou.com)



This brochure describes versions and configuration options for Manitou products which may be fitted with different equipment. The equipment described in this brochure may be standard, optional or not available depending on version. Manitou reserves the right to change the specifications shown and described at any time and without prior warning. The manufacturer is not liable for the specifications given. For more information, contact your Manitou dealer. Non-contractual document. Product descriptions may differ from actual products. List of specifications is not comprehensive. The logos and visual identity of the company are the property of Manitou and may not be used without authorisation. All rights reserved. The photos and diagrams contained in this brochure are provided for information only.

MANITOU BF SA - Limited company with board of directors - Share capital: 39,547,824 euros - 857 802 508 RCS Nantes