

Technical sheet :

# 280 TJ-X



 **MANITOU**  
HANDLING YOUR WORLD

Get in touch today for sales enquiries or further information

[CONTACT US](#)

 0800 30 30 90 [abequipment.co.nz](http://abequipment.co.nz)

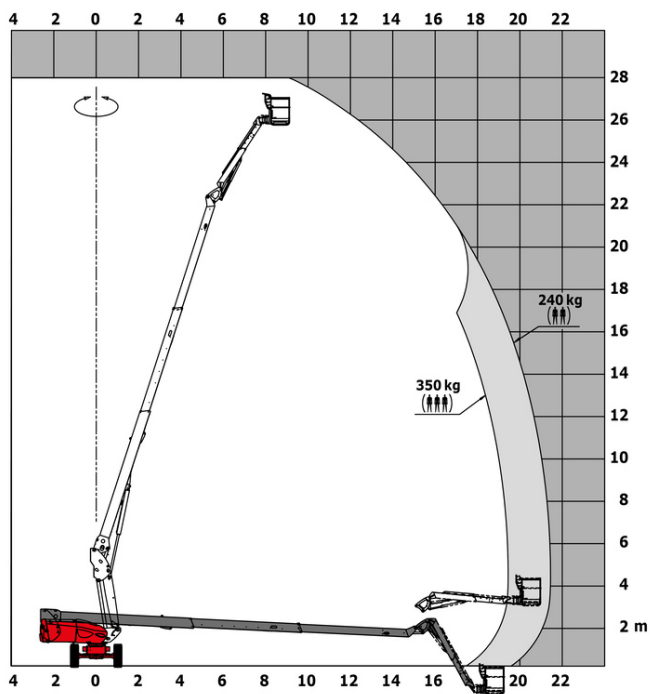


Capacities		Metric
Working height	h21	27.75 m
Max. outreach		21.45 m
Pendular arm rotation (bottom)		+62 °
Platform capacity	Q	350 kg
Turret rotation		360 °
Platform rotation (right / left)		90 ° / 90 °
Number of people (inside / outside)		3 / 2
Weight and dimensions		
Platform weight*		16650 kg
Platform dimensions (length x width)	lp / ep	2.30 m x 2.30 m
Overall width	b1	2.48 m
Overall length	l1	11.36 m
Overall height	h17	2.75 m
Overall length (stowed)	l9	8.04 m
Overall height (stowed)	h18	2.71 m
Floor height (access)	h20	0.48 m
Internal turning radius (over tyres)	b13	1.75 m
Ground clearance	m4	0.41 m
Ground clearance at centre of wheelbase	m2	0.41 m
Wheelbase	y	2.80 m
Performances		
Drive speed - stowed		4.70 km/h
Drive speed - raised		0.80 km/h
Gradeability		34 %
Permissible leveling		4 °
Wheels		
Drive wheels (front / rear)		2 / 2
Braking wheels (front / rear)		2 / 2
Engine/Battery		
Engine brand / model		Kubota - V2403-M
I.C. Engine power rating / Power (kW)		46 Hp / 34.10 kW
Miscellaneous		
Ground Pressure		22.25 dan/cm2
Hydraulic Pressure		250 bar
Fuel tank		72 l
Vibration on hands/arms		< 0 m/s <sup>2</sup>
Daily consumption **		10.81 l
Standards compliance		
This machine is in compliance with:		European directives: 2006/42/EC- Machinery (revised EN280:2013) - 2004/108/EC (EMC) - 2006/95/EC (Low voltage)

\*\* According to "REDUCE cycle"

# 280 TJ-X - Load chart

## Load Chart metric



# Equipment

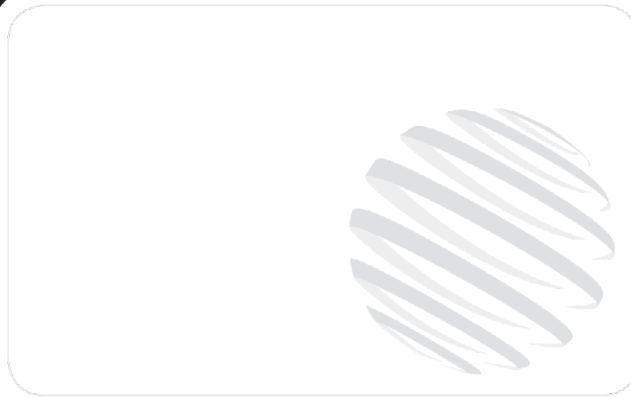
---

## Standard

20" tyres  
230V Predisposition  
4 simultaneous movements  
4 wheel drive  
4 wheel steer with crab mode  
Audible alarm and illuminated indicator lamp (leveling, overload, lowering)  
Backup electrical pump  
Basket 2,300 mm  
CAN bus technology  
Continuous turret rotation  
Dead man pedal  
Differential locking on rear axle  
Electronic platform compensation  
Emergency stop button in platform and on frame  
Engine on swivel chair  
Front axle with limited slip  
Fuel gauge with low level indicator  
Hom in the platform  
Integrated diagnostic assistance  
Oscillating front axle

## Optional

110 or 230V plug with differential circuit breaker  
Additional storage boxes  
Air predisposition  
Basket 1,800 mm  
Beep on every movement  
Beep upon travel  
Biodegradable oil  
Catalytic cleaner  
Coded anti-start  
Extreme cold oil  
Highly capacity battery  
Lockable fuel cap  
Non-marking tyres  
Onboard generator (3,5 or 5 kW)  
Refinery kit  
SMS : Safe Man System  
Safety harness  
Screen protection on the lower box control  
Turret cover with key lock  
Water predisposition



Siège Social  
430 rue de l'Aubinière - 44150 Ancenis Cedex - France  
Tel: +33(0)2 40 09 10 11 - Fax: +33 (0)2 40 09 10 97  
[www.manitou.com](http://www.manitou.com)



This brochure describes versions and configuration options for Manitou products which may be fitted with different equipment. The equipment described in this brochure may be standard, optional or not available depending on version. Manitou reserves the right to change the specifications shown and described at any time and without prior warning. The manufacturer is not liable for the specifications given. For more information, contact your Manitou dealer. Non-contractual document. Product descriptions may differ from actual products. List of specifications is not comprehensive. The logos and visual identity of the company are the property of Manitou and may not be used without authorisation. All rights reserved. The photos and diagrams contained in this brochure are provided for information only.

MANITOU BF SA - Limited company with board of directors - Share capital: 39,668,399 euros - 857 802 508 RCS Nantes

Get in touch today for sales enquiries or further information

CONTACT US



0800 30 30 90

[abequipment.co.nz](http://abequipment.co.nz)

