

TRACTION-WINCH

T8 - T10 - T14 - T20 Series



CATALOG

TimberMAX Traction-Winch

V1 / 2023-09



www.TimberMAX.ca



TRACTION-WINCH

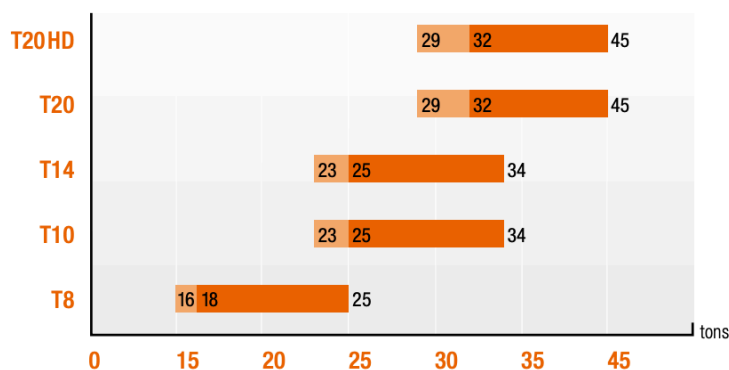
1. Winch units

Pos.	Part No.	DESCRIPTION
1	T710001	Winch T8
2	T710020	Winch T10
3	T710021	Winch T14
4	T710022	Winch T20
5	T710023	Winch T20HD

For more information, please contact a TimberMAX representant.

*Refer to document "Base Carrier Selection" for more information.

Base Excavator size chart



Metric specifications

	T8	T10	T14	T20	T20HD
Winch Pull (kN)	80	100	125-140	180	180
Rope dia. (mm)	16	16	19	22	25
Capacity (m)	340	500	360	540	420
Max Speed (km/h)	10	6	6	8	8
Weight (kg)	1700	3000	3000	4200	4200
Min. Flow (l/min)	200	200	200	300	300
Pressure (bar)	310	290	340	320	320

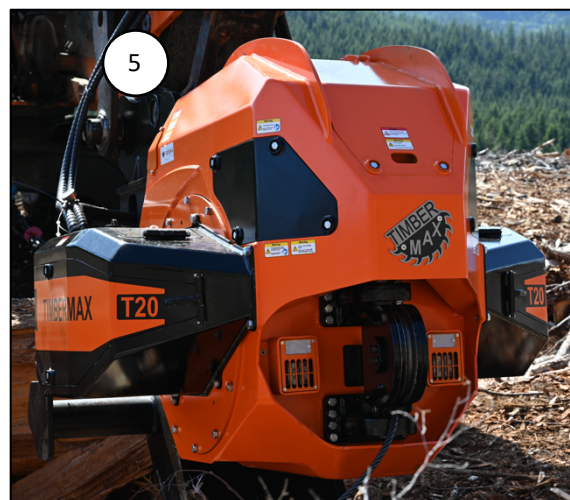
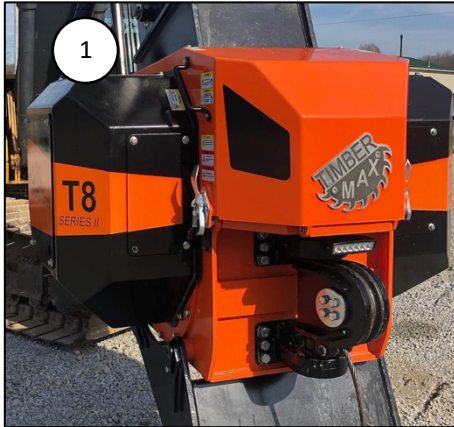
Not included T10-T20 Winch Bracket 1200kg





T8 - T10 - T14 - T20 - T20HD

TRACTION-WINCH





T8 - T10 - T14 - T20 - T20HD

TRACTION-WINCH

2. Mounting systems

Pos.	Part No.	DESCRIPTION
1	T710024	Winch bracket with accessories T10 / T14 / T20 / T20HD <i>Compatible with: T710020, T710021, T710022 and T710023</i>
2	T710007	Excavator mount with spade and accessories T8 <i>Compatible with: T710001</i>
3	T600831	T8 Winch spade only <i>Compatible with: T710001</i>
4	T601434	Top mount winch bracket with accessories T10/T14 <i>Compatible with: T710020 and T710021</i>
5	T710008	3 points tractor mount – Timbermax Hyd. Power pack (No picture available) <i>Compatible with: T710001</i>
6		T8 Rear mounting - No mounting parts needed <i>Compatible with: T710001</i>

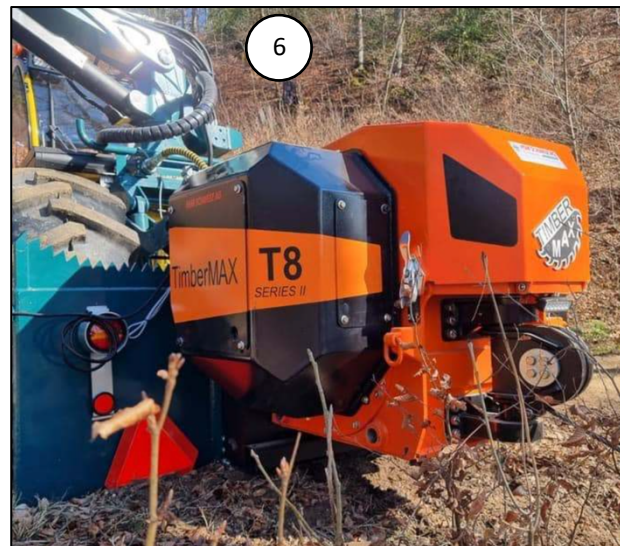
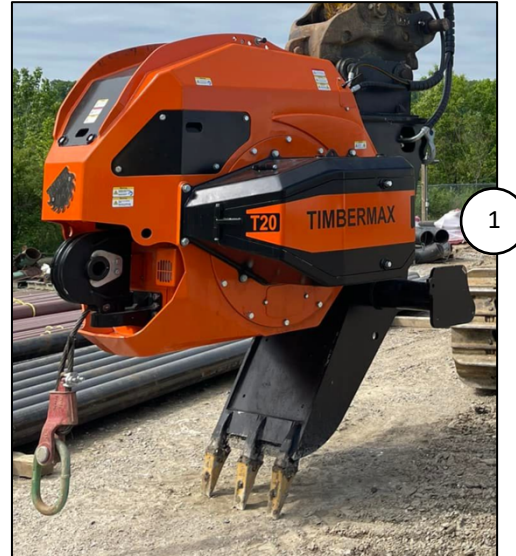
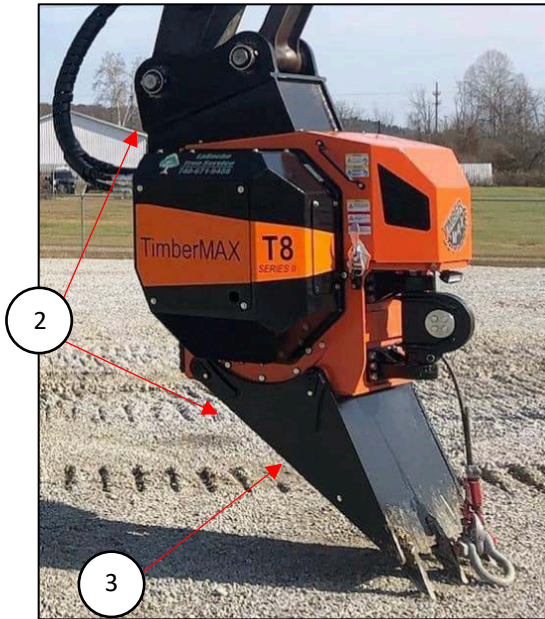
For more information, please contact a TimberMAX representant.





T8 - T10 - T14 - T20 - T20HD

TRACTION-WINCH





T8 - T10 - T14 - T20 - T20HD

TRACTION-WINCH

3. Install kits for the base machine

Pos.	Part No.	DESCRIPTION
1	T600809	Winch install kit 901 T8/T10/T14/T20/T20HD (STD valves) Series II <i>Compatible with units located in all countries, BUT Australia/New-Zealand</i>
2	T600811	Winch install kit 901 T8/T10/T14/T20/T20HD (LS valves) Series II <i>Compatible with units located in all countries, BUT Australia/New-Zealand</i>
3	T600810	Winch install kit 903 T8/T10/T14/T20/T20HD (STD valves) Series II <i>Compatible with units located in Australia/New-Zealand ONLY</i>
4	T600815	Winch install kit 903 T8/T10/T14/T20/T20HD (LS valves) Series II <i>Compatible with units located in Australia/New-Zealand ONLY</i>

For more information, please contact a TimberMAX representant.



TRACTION-WINCH





T8 - T10 - T14 - T20 - T20HD

TRACTION-WINCH

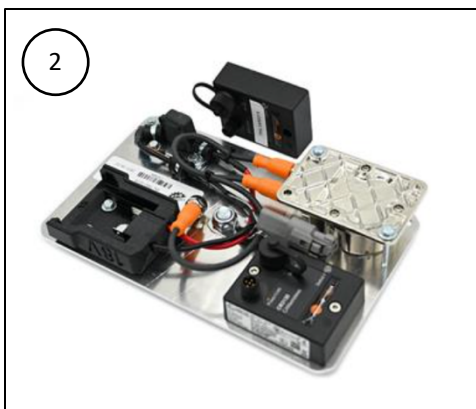
4. Install kits for the slope machine

Pos.	Part No.	DESCRIPTION
1	T600888	Advanced slope install kit for tracked machine Series II (Wireless inclinometer module not included)
2	T701004	Wireless inclinometer module for tracked machine with M18 Milwaukee socket (battery not included) <i>Option for T600888</i>
3	T600889	Advanced slope install kit for wheeled machine Series II (inclinometer included)
4	T601270	Smart mode slope install kit Series II

For more information, please contact a TimberMAX representant.



TRACTION-WINCH





TRACTION-WINCH

5. iWinch Control system and accessories

Pos.	Part No.	DESCRIPTION
1	T600808	iWinch complete Series II (No LRT, no remote)
2	T601518	iWinch SII power supply harness 12v plug
3	T601519	iWinch SII power supply harness open lead
4	T601516	iWinch SII power supply harness Milwaukee M18 socket
5	T601517	iWinch SII power supply harness Dewalt 20V socket

For more information, please contact a TimberMAX representant.





T8 - T10 - T14 - T20 - T20HD

TRACTION-WINCH

2



5



3



4

